



Administration Guide

| | | |
|--|-------------------------|-------------------------|
| Product: n-MF HP | Version: 3.1 | Version Doc: 1.0 |
| Author: Wagner Petri | Date: 14/01/2010 | |
| Applies to: Customers and resellers | | |

| Details of Change Document | |
|----------------------------|--------------|
| Changed By: | Date: |
| Release Note: | |

Index

| | | |
|-------|--------------------------|---|
| 1. | Introduction..... | 3 |
| 2. | Prerequisite | 3 |
| 2.1 | Operating systems..... | 3 |
| 2.2 | Software..... | 3 |
| 2.3 | Compatible printers..... | 3 |
| 3. | Settings..... | 3 |
| 3.1 | n-MF HP Admin..... | 3 |
| 3.1.1 | Adding printers | 3 |
| 3.1.2 | Removing printers..... | 4 |
| 3.1.3 | Options account..... | 4 |
| 3.1.4 | Settings domains..... | 4 |
| 3.2 | Users account..... | 5 |
| 4. | Operation..... | 6 |
| 4.1 | Files generation..... | 6 |

1. Introduction

A configuration and administration guide for the Module NDDigital n-MF HP will be presented. This Module is responsible for billing copies, fax and prints from HP printers, capturing this information through the hardware.

2. Prerequisites

2.1 Operational Systems

The approved Operational Systems are:

- Windows 2000 Server SP4;
- Windows 2003 SP2;
- Windows XP SP3;

2.2 Software

- Microsoft .Net Framework 2.0;
- NDDigital n-Host;
- HP Color LaserJet CM4730;
- HP OfficeJet K550;
- HP LaserJet 1300;
- HP LaserJet 1320.

2.3 Compatibles Printers

NDDigital approved models:

- HP LaserJet M3035 MFP

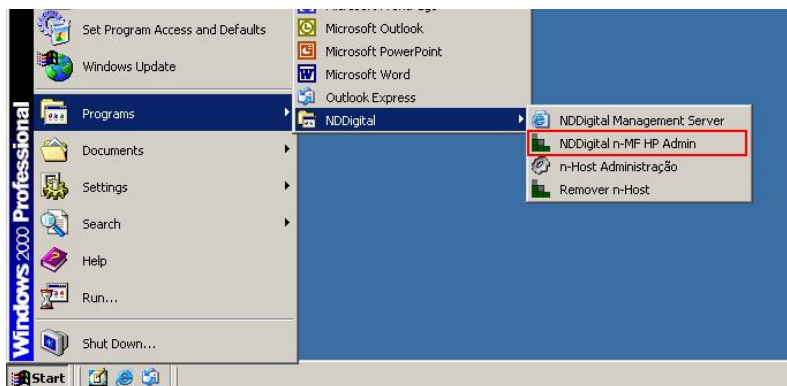
Besides the approved models others HP Printers may work properly, but was not tested by NDDigital. Contact us to request the approval.

3. Settings


3.1 n-MF HP Admin

When n-MF HP is installed no printer is monitored. To make the jobs billable some settings should be done.

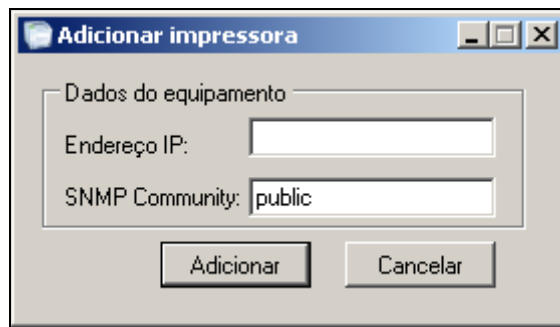
For this, access the admin interface: **Start>Programs>NDDigital>NDDigital n-MF HP Admin** as shown in figure.



3.1.1 Adding Printers

For the printer to be monitored it must be added in the n-MF HP administration interface. Open the NDDigital n-MF HP Admin and click on the icon .

Fill out the Printer's IP and **SNMP community**.



Only HP printers may be registered and SNMP community needs be equal to what has been configured in the printer.

After that the printer is already being monitored and the logs will be sent to the n-Host every 30 minutes.

3.1.2 Removing Printers

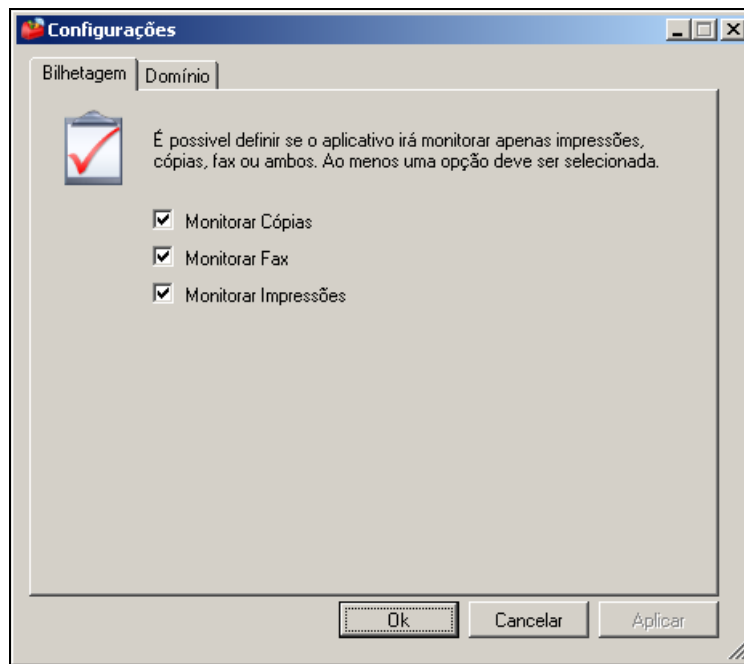
To stop monitoring a printer by the n-MF HP select the desired printer and click the following icon



3.1.3 Billing Options

It is possible to define which jobs are going to be monitored (prints, copies or fax).

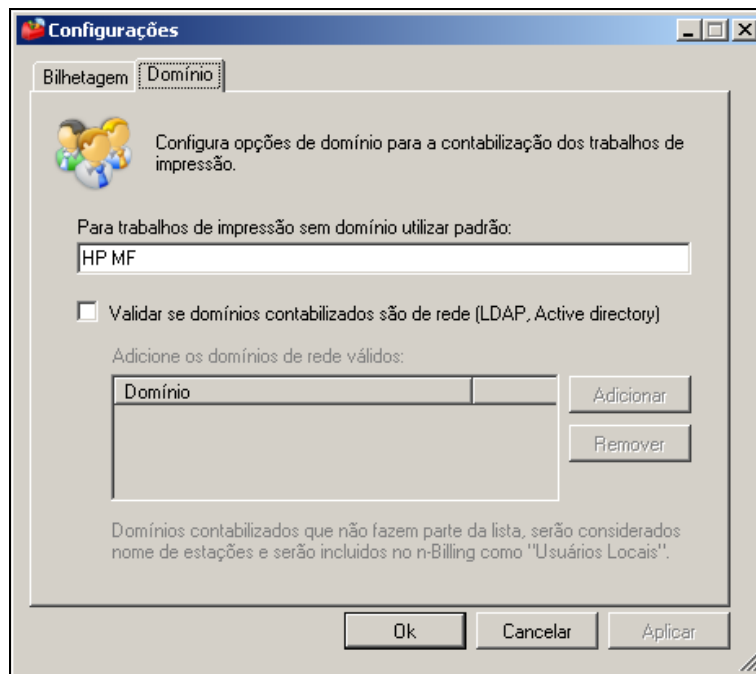
Go to **Tools>Settings**, a window where selecting the option you want is possible will open. By default the three options are already selected.



3.1.4 Setting Domains

It is possible to configure the Jobs domain through the HP MF admin. Go to Tools>Settings and access the **Domain** tab. A window will open as shown in figure.

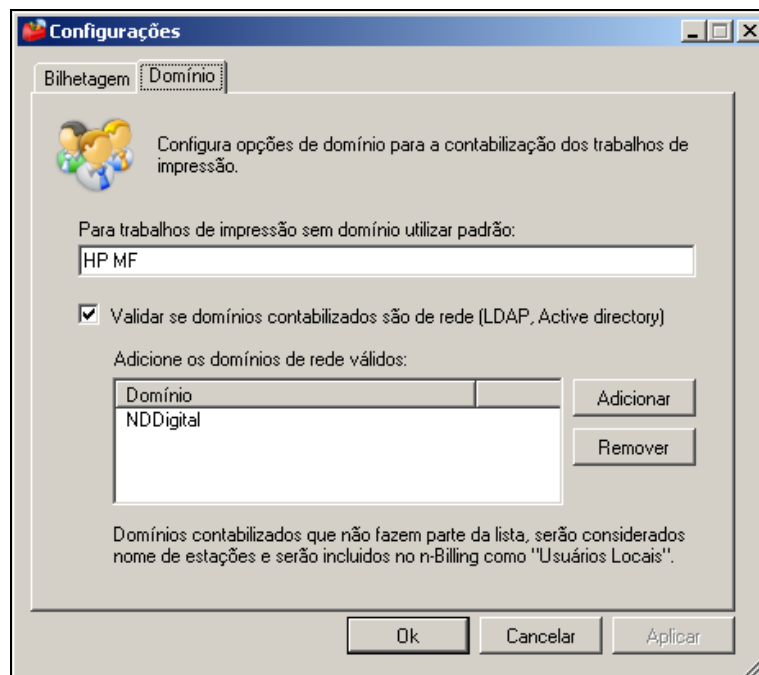
By default prints, fax and copies without domain will be assigned to the HP MF domain. To change type the desired name and click **OK**.



Selecting the option “Validate network accounted domain” the MF HP will consider the accounted job domain are local domains. To add the valid network domains click **Add** and type the domain name.

The domains of the list are considered network domains and domains outside the list will be considered locals.

In the example of Figure 5, the NDDigital domain and the HP MF domain will be considered as network domains and the others as local domains (stations out of the domain).



3.2 Users Accounting

The jobs accounting will occur as the authentication configured in the printer:

- User PIN authentication: the jobs have no title or domain only the user name.
- Group PIN authentication: the jobs have no title or domain only the user name.
- Authentication with LDAP server: do not have a domain or a title only the user name.
- No authentication: no domain nor user.
- Fax: no title, user or domain.

- Printing: could be printer's internal pages or printouts from stations. The internal pages can be configuration pages, fax confirmation etc., this will have no username or date. The Windows prints bring the domain information and user who sent the print.
- Prints sent through drivers that are not from the printer will not bring the user or the domain information.

4. Operation

4.1 File Generation

The n-MF HP works using the **NDDigital n-MF HP Service** which communicates with the network printers to search for printing data.

When any copy, print or fax is performed this service creates the log file: "**<Setup Directory>\Temp**".

Every 30 minutes it will transform this log file to a .NPL file and send to n-Host.