



## Administration Guide

<b>Product: n-HP Host</b>	<b>Version: 3.3</b>	<b>Version Doc: 1.0</b>
<b>Author: Wagner Petri</b>	<b>Date: 14/01/2010</b>	
<b>Applies to: Customers and resellers</b>		

<b>Details of Change Document</b>	
<b>Changed By:</b>	<b>Date:</b>
<b>Release Note:</b>	

# Index

1.	Introduction .....	3
2.	Pre-requisites .....	3
3.	Homologated Equipments .....	3
4.	Configuration Interface .....	3
4.1	Printers Monitoring Settings .....	3
4.1.1	Automatic Printers Register .....	4
4.1.2	Manual Printer Register .....	4
4.1.3	Printers Modification .....	4
4.1.4	Delete a Printer .....	5
4.2	System Settings .....	5
4.2.1	Language Guide .....	5
4.2.2	Time Tab .....	6
4.2.3	Server Guide .....	6
4.3	Captured Information .....	7

## 1. Introduction

The module NDDIGITAL n-HP Host is responsible for capturing data from counters and network printer's supplies and sends them to the Datacenter for later viewing of the data in the form of reports.

It's also responsible for receiving files from n-Client and sends them to the Datacenter. The NDDIGITAL n-Client module is responsible for doing the billing of prints, is installed in all the machines that it has a printer installed and from there to each print made it generates a log containing all the information of printing and sends the n-HP Host and subsequent to these prints is available for viewing in the datacenter. For this printing report option the licensing should be released, for more information consult the NDDIGITAL support.

## 2. Pre-requisites

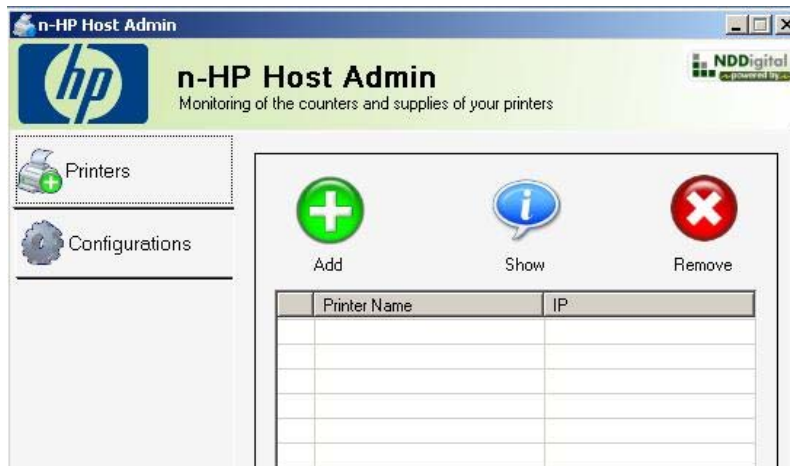
- There can be no password on the printers' web; otherwise the n-HP Host can not capture the information.
- The UDP 161, UDP 9300 and HTTP 80 gates must be released on the firewall.

## 3. Homologated Equipments

At first all the equipment that satisfies the following RFCs: Printer MIB RFC 1514, Printer MIB RFC 1759.

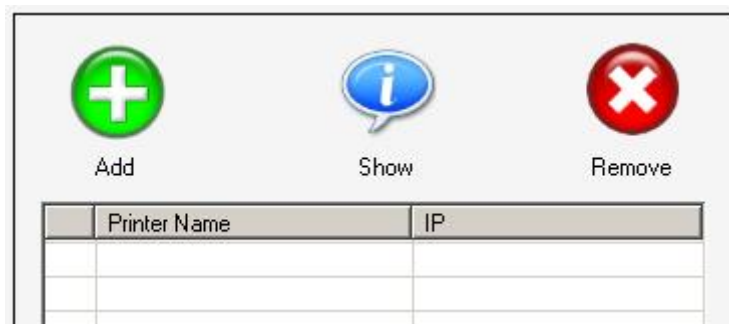
## 4. Configuration Interface

After installing the n-HP Host, it created a shortcut in start menu pointing to the administration interface. To access go to: start> all programs> HP> n-HP Host. The following window will appear; on in it is possible to make the settings necessary for the operation of this module.



### 4.1 Printers Monitoring Settings

For the information of counters and supplies be handle, Is necessary that printers are registered in n-HP Host Admin and consequently in a .XML file called NetworkPrinters, which is on the install folder of the n-HP Host. In the initial screen of the configuration interface are showed the monitored printers. At first is none registered.



### 4.1.1 Automatic Printers Register

The n-Client sends to n-HP Host files with network printers' information which it is monitoring, the n-HP Host to read these print files, examines and verifies if there are network printers. If there are, it will register these printers automatically.

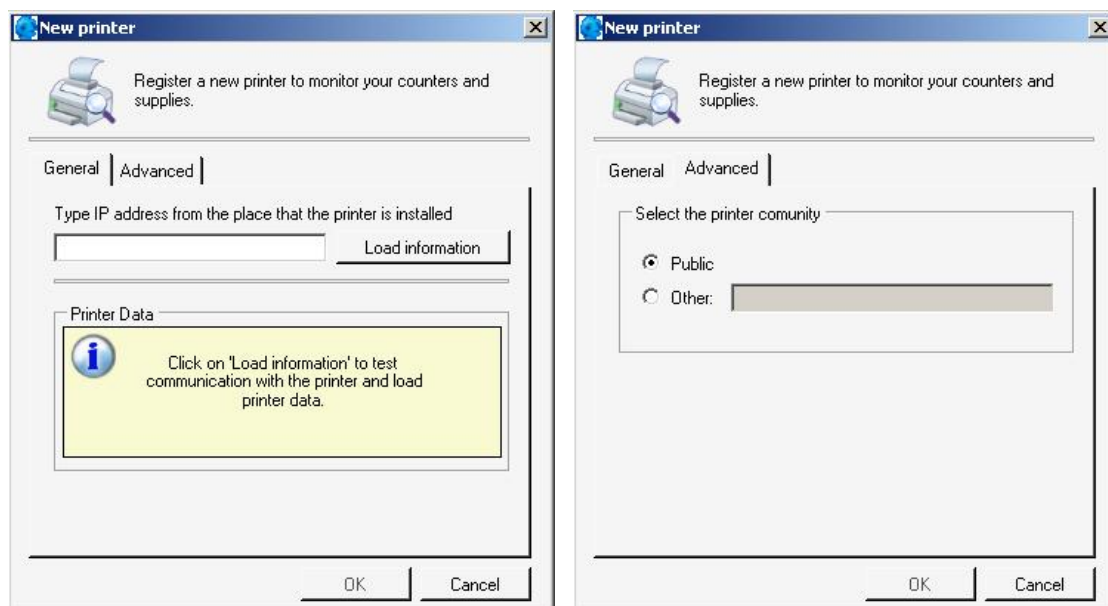
Note: The n-Client sends to SNMP Community as public, if there is any printer with a different community, must be changed for the correct name in the n-HP Host Management interface, which is equal to the web of the printer.

### 4.1.2 Manual Printers Register

To register the printer manually clicking the icon "Add", as shown in image below.



The following screen will open, there are two tabs: "General" and "Advanced." In the guide "General" must be typed the IP address of the printer that you want to track, then click on "information load". If the printer is responding, simply click "OK" to add it to the list of monitoring. If it does not respond, you should check if the community of the printer is really public, if not must go to the Advanced tab, select the option "Other" and enter the community set in the printer, then simply return to the General tab and click upload information again. If the printer is not responsible for any problems on the network, you can add it anyway, just click "OK".



### 4.1.3 Printers Modification

If a printer pass through any change, such as exchange of address or change the community, its need that information is updated in the interface configuration. To do this just deletes the printer that is with the data out and adds it again.

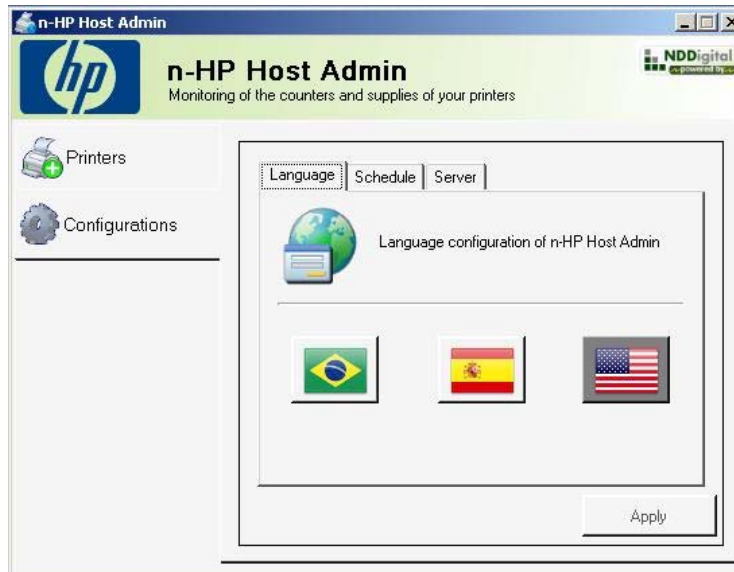
#### 4.1.4 Delete a Printer

To delete a printer just select that and click the "Remove" icon as shown in image below.



#### 4.2 System Settings

In the initial screen of the administration interface, if you click on "Settings" the following screen will appear; on it is possible to obtain some important information for the operation of the system.



##### 4.2.1 Language Guide

The first tab displayed when you click in "Settings" tab, is the language, in it is possible to configure the system language, and they are: English, Portuguese and Spanish. To select the standard language simply click on their flag and logo in sequence on Apply.



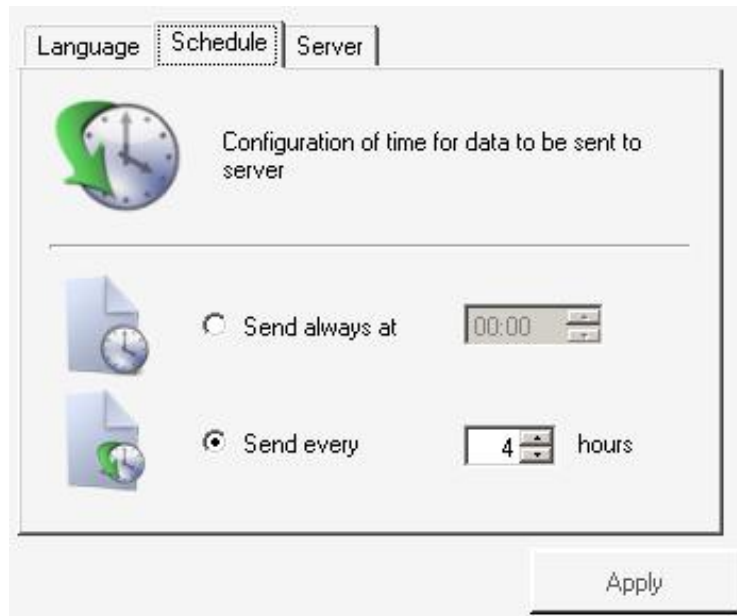
### 4.2.2 Time Tab

On this tab, you can configure the frequency for sending files to the datacenter. This frequency can be set at fixed schedule or range of hours.

**Always send at:** choosing this option, you must mark an appointment setting in which the files will be sent to the n-Billing, if this option is selected the files will be sent to the n-Server only once a day.

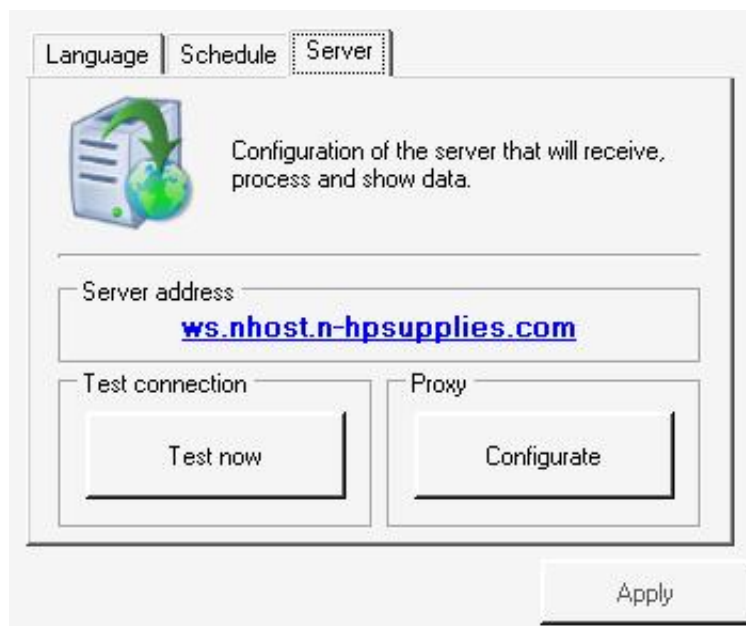
**Send to each:** if this option is chosen, you must set a range of time for sending the files to the n-Host.

**By default,** the n-Host performs the sending of files once each 4 hours.

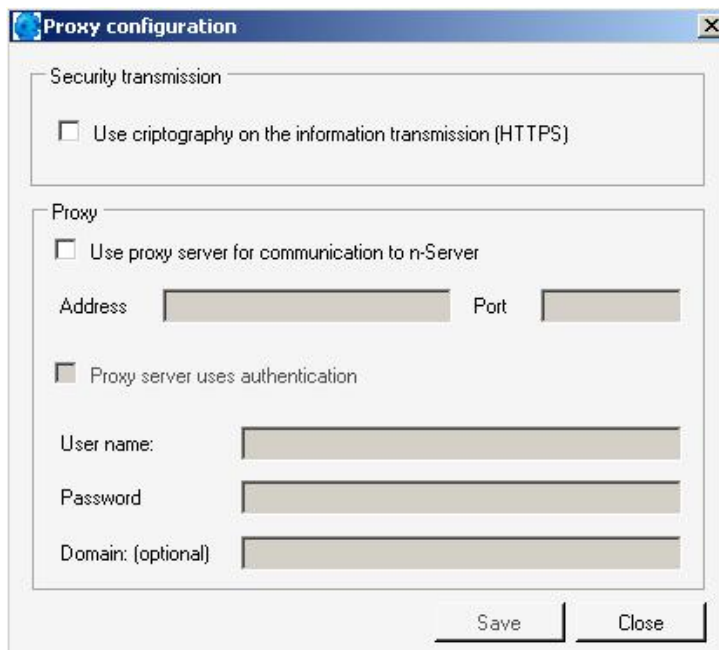


### 4.2.3 Server Guide

On this tab you can perform a connection test with the datacenter to determine if the machine is able to communicate with it.



Also is possible to perform the settings proxy if necessary, click on **“Configure”**, and the following screen will appear, in it just to inform these settings.



### 4.3 Captured Information

The n-HP Host can capture a lot of information in the MIB of the printers, they are described below:

#### Counters:

- General;
- Print;
- Fax;
- Copy;
- A4;
- A5;
- foolscap;
- Executive;
- Letter;
- A3andBiggerSizes.

The n-HP Host can not even get all the counters on all printers, each printer has a different structure, frequently few new types of counters will be approved for the printers.

#### Supplies:

- Models of tonner;
- Status of tonner.

Is possible to capture the serial of tonner that is being used, but for now only some printers have this feature.