



Installation Guide

Product: n-Client	Version: 3.3	Version do Doc.:1.0
Author: Test Team	Date: 22/01/2010	
Applies to: Customers and Resellers		

Details of Change Document	
Changed by:	Date:
Release Note:	

Index

1. Pre requisites	3
1.1 Hardware.....	3
1.1.1 Workstations.....	3
1.1.2 Print Servers	3
1.2 Network and Enviroment requirements	3
1.3 Approved Operational Systems	3
2. Installation	3
2.1 Language options.....	3
2.2 Presentation.....	3
2.3 Installation Directory	4
2.4 n-Host Information.....	5
2.5 Initiating Copy of Files.....	5
2.6 Installing n-Client.....	6
2.7 Completing Installation.....	7

1. Pre requisites

1.1 Hardware

1.1.1 Workstations

- 7,3 MB of free space for installation;
- 60% of free space on spool average volume;
- 32 MB RAM

1.1.2 Print Servers

- 1GB de RAM;
- Processador 2,0Ghz or superior;
- Space on disk for installation of 7,3MB;
- 60% of free space on spool average volume;

1.2 Network and Enviroment requirements

- 5656 Port released on firewall for data transit;
- Communication SNMP active on network printers;
- Protocol SNMP released for network communications;
- Event generation 10 is mandatory on printing (configured by the software);
- Generation of .SHD and .SPL files to a correct billing;
- Network access to station or server where n-Host is installed.

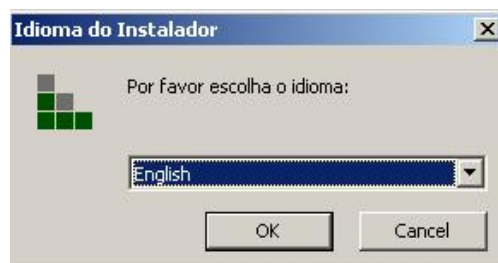
1.3 Approved Operational Systems

- Windows 2000 Professional SP4;
- Windows 2000 Server SP4;
- Windows 2000 Advanced Server SP4;
- Windows 2003 x86 SP1 or superior;
- Windows 2003 x64 SP1;
- Windows XP Professional x86 SP1 or superior;
- Windows XP Professional x64;
- Windows Vista x86;
- Windows Vista x64;
- Windows 2008 x86;
- Windows 2008 x64.

2. Installation

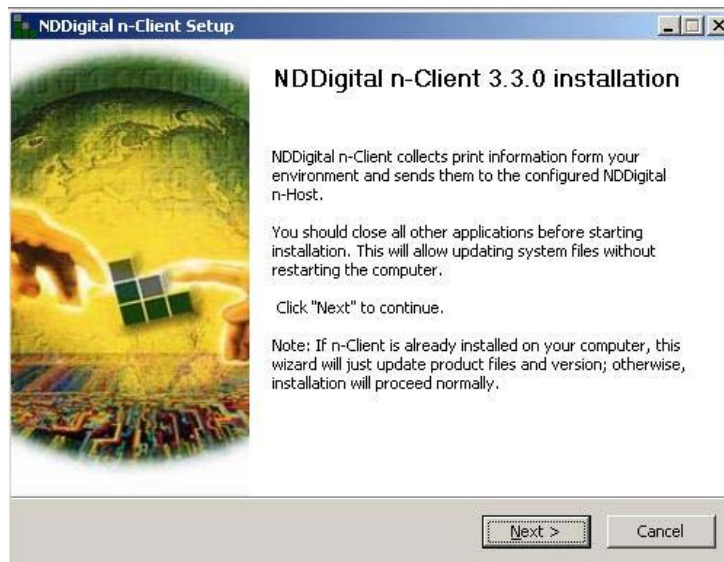
2.1 Language options

The first step is to choose the installation language. Available languages are Portuguese (Brazil), English (U.S.) and Spanish (Spain), choose the language and click **OK**.



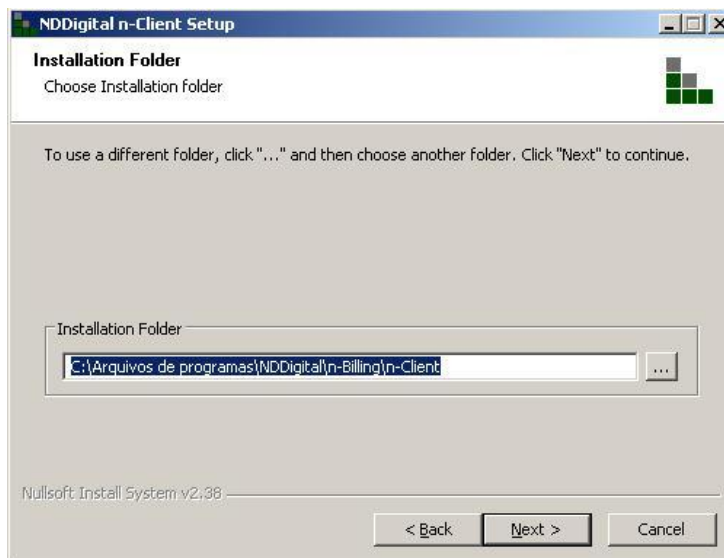
2.2 Presentation

Next the installation wizard will start to facilitate installation of NDDigital n-Client. It is recommended that during installation to close all applications in use. After reading the instructions click Next.

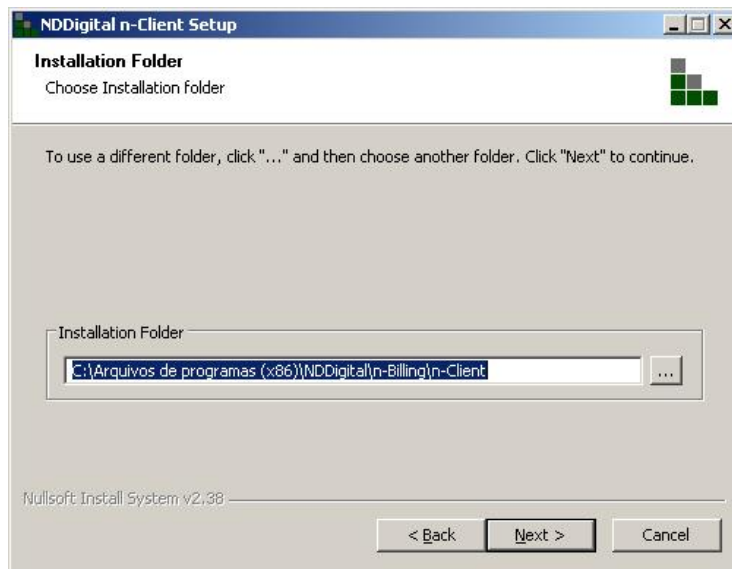


2.3 Installation Directory

The next screen will indicate the folder where n-Client will be installed. By default n-Client will be installed on local directory "**Program Files\NDDigital\n-Billing\n-Client**". To install in this folder click **Next** or to install in another directory click **Browse** and choose the directory.

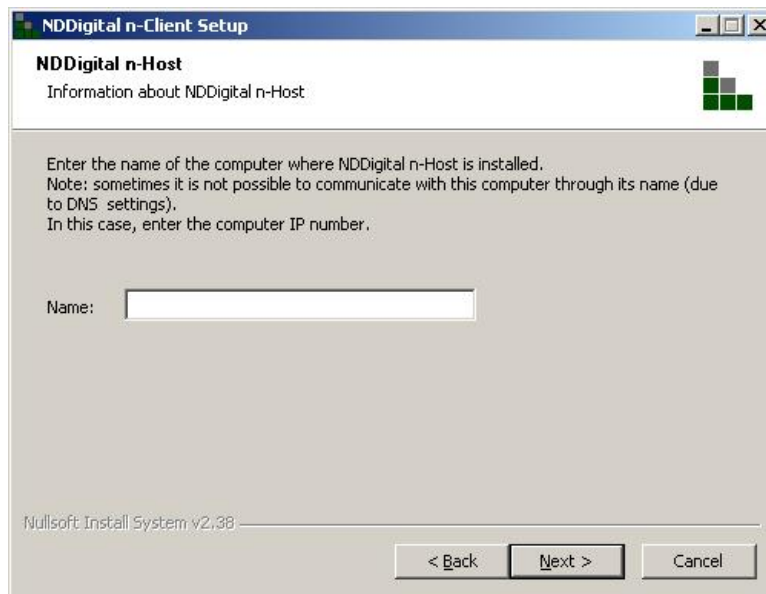


P.S.: In the case of 64-bit systems the default directory is: "**Program Files (x86)\NDDigital\n-Billing\n-Client**". Changing is possible.



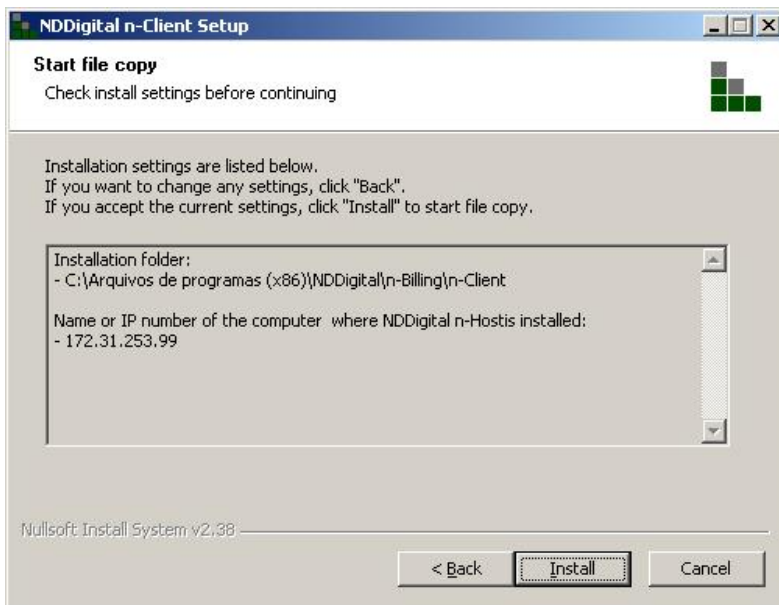
2.4 n-Host Information

After, you should indicate the computer's name or IP where NDDigital n-Host will be installed. Fill in the text box with this information and to confirm click **Next**.



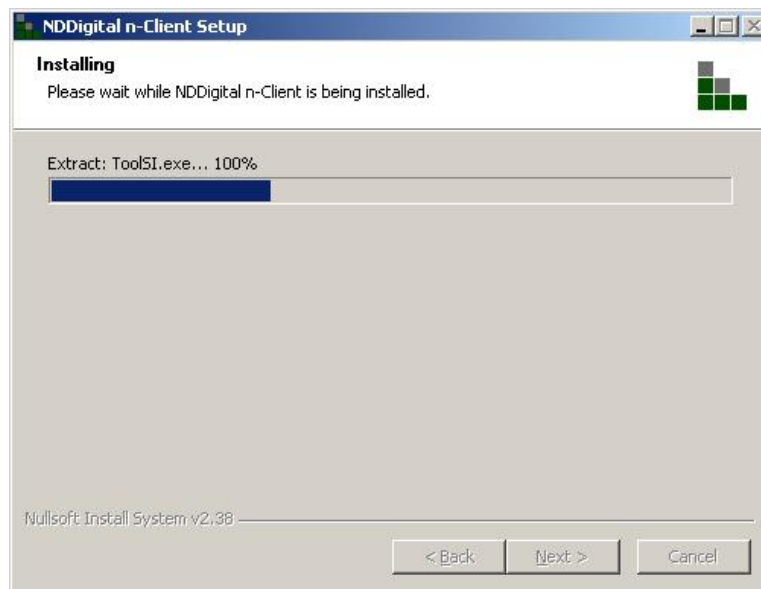
2.5 Initiating Copy of Files

Review the installation settings, being satisfied click **Install**. If not, go **back** and change what is needed.



2.6 Installing n-Client

Please wait the installer to perform the copy of the necessary files for the system to work.



2.7 Completing Installation

Installation is complete, click **Finish**.

